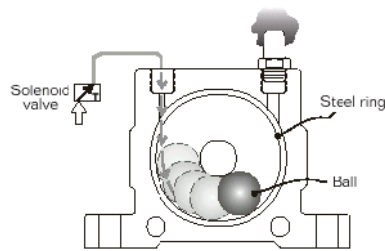


-
-
-
-

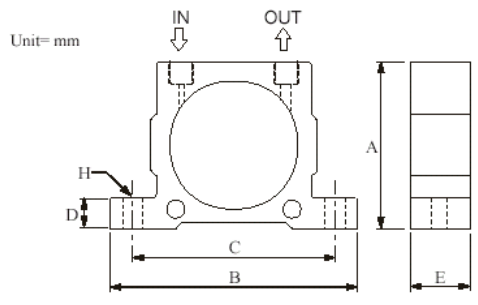
() : 100
75 – 95 dBA

Solenoid valve –
Steel ring –
Ball –



		B	C	D	E	ØH		
1010 (BVK-10)	51	86	68	12	20	7	1/4"	1/4"
1013 (BVK-13)	67	113	90	16	24	9	1/4"	1/4"
1016 (BVK-16)								
1020 (BVK-20)	83	128	104	16	33	9	1/4"	1/4"
1025 (BVK-25)								
1032 (BVK-32)	103	160	130	20	44	11	3/8"	3/8"

	, /			(N)			(ℓ/)			()
	2Bar 29PSI	4Bar 58PSI	6Bar 87PSI	2Bar 29PSI	4Bar 58PSI	6Bar 87PSI	2Bar 29PSI	4Bar 58PSI	6Bar 87PSI	
1010 (BVK-10)	22,500	28,000	34,000	250	470	710	92	150	200	140
1013 (BVK-13)	15,000	18,500	22,500	320	550	870	94	158	225	260
1016 (VK-16)	13,000	17,000	19,500	450	800	1,100	122	200	280	300
1020 (VK-20)	10,500	14,500	16,500	720	1,220	1,720	130	230	340	530
1025 (BVK-25)	9,200	12,200	14,000	930	1,570	2,050	160	290	425	630
1032 (BVK-32)	7,800	9,700	12,500	1,510	2,470	3,210	215	375	570	1150



IN -

OUT -