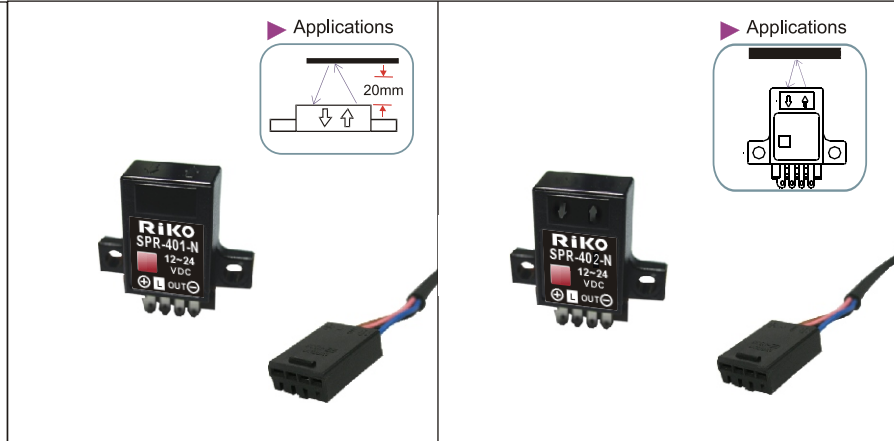


◆ **Shape/外觀:**

◆ **Specifications /規格表:**

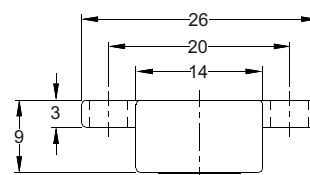
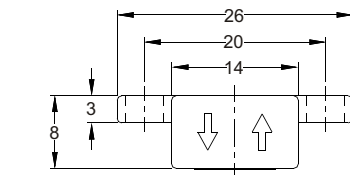


Catalog Listing / 型號	SPR-401-N	SPR-401-P	SPR-402-N	SPR-402-P
Description / 檢出方式	Diffuse reflection / 擴散反射式			
Sensing distance / 檢出距離	20 mm			
Output method / 輸出模式	NPN.NO/NC		PNP.NO/NC	
Response time / 反應時間	1 ms Max.			
Light emitter / 發光源	940 nm.			
Operating voltage / 工作電壓	DC: 12 ~ 24 VDC			
Current consumption / 消耗電流	25 mA Max.			
Output current / 輸出電流	24 VDC 100 mA max			
Insulation resistance / 隔離阻抗	20M Ω Min. 500VDC			
Dielectric strength / 絕緣耐壓	1000VAC for 1minute			
Ambient humidity / 工作溼度範圍	35%~85% RH			
Weight / 重量	Approx. 3g			
Operating temperature / 工作溫度範圍	- 20 °C ~ + 45 °C			
Housing material / 外觀材質	ABS			
Wiring method / 出線方式	EE1001/EE1006			
Protection degree / 防水等級	IP66			

◆ **Dimensions /尺寸圖:**

SPR-401-N/P

SPR-402-N/P



Pin fitting			
①	②	③	④
+	L	OUT	-

