

POLYNOVA®

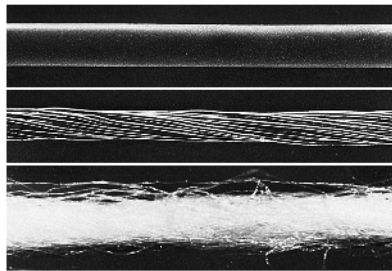
POLYNOVA

) , (

POLYNOVA.

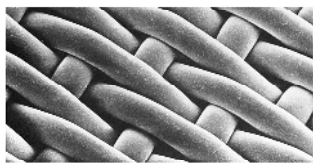
30 / 2 1500 / 2

4,5 .



MONODUR

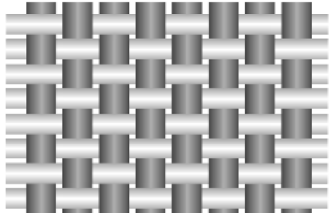
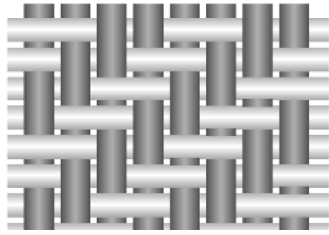
POLYNOVA



POLYNOVA

()

POLYNOVA



3

: 4,5

».

	DIN600 01	/ 3	65%RH 20°C %		CN/dtex	N/mm ²	%	%	%	()		
				-, %						°C	°C	
	CO	1,5	7-11	45-50	2,5-5	35-70	100-110	6-10	100-110	100	200	
	WO	1,3	15-17	40-45	1-2	15-25	70-90	25-60	110-130	80	110	
	GF	2,4-2,6	0	0-0,5	7-12	175-300	100	2-5	100	220	400	
6.6	6, PA	1,14	3,5-4,5	10-15	4-9	70-100	80-90	15-25	105-125	100	170/180	
6.10	PA	1,07	2	3-4	4	45	100	20-30	100-110	100	170	
11	PA	1,04	1,2	3	4	40	95	25	100-105	90	140	
	Nomex*	-	1,38	5	12-17	5,3	75	60-80	20-25	60-80	180	250
	Kevlar*	-	1,44	7	15-20	18-25	250-350	100	2-4	100	180	250
()	PES	1,38	0,4	3-5	7-9,5	95-130	95-100	10-20	100-105	150	180	
()	PES	1,28	0,2	1,1	4	50-60	95-100	24	100-105	140	180	
	PE	0,95	0	0	3,5-7	32-65	100	15-30	100	60	90	
	PP	0,92	0	0-0,5	2,5-6	22-55	100	15-30	100	80	100	
(PVDF)	-	1,78	0	0	2-5	35-80	100	30	100	110	150	
	PAN	1,15	1-1,5	5-12	3,5-4,5	40-50	80-95	25-40	100-120	80	100	
(PVC)	CLF	1,38	0-0,2	4-6	1,5-3	20-40	100	14-60	100	60	70	
(PVDC)	CLF	1,72	0	4-6	1,6-2,1	25-35	100	16-21	100	70	80	
	PTFE	2,3	0	0	1,4	20-30	100	15-32	100	220	280	

**POLYNOVA
MONODUR**

-
-
-
-
-
-
-
-
-



(

DIN ISO 9001/EN29001)

DIN ISO 9001/EN29001.

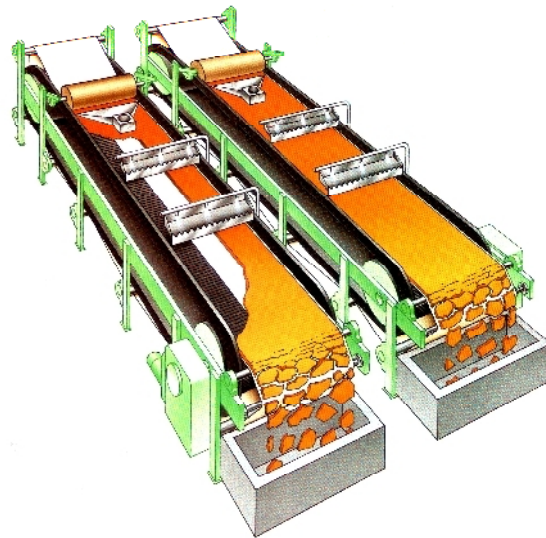
(/)

(L/dm² / min 20 HW).

POLYNOVA –

POLYNOVA

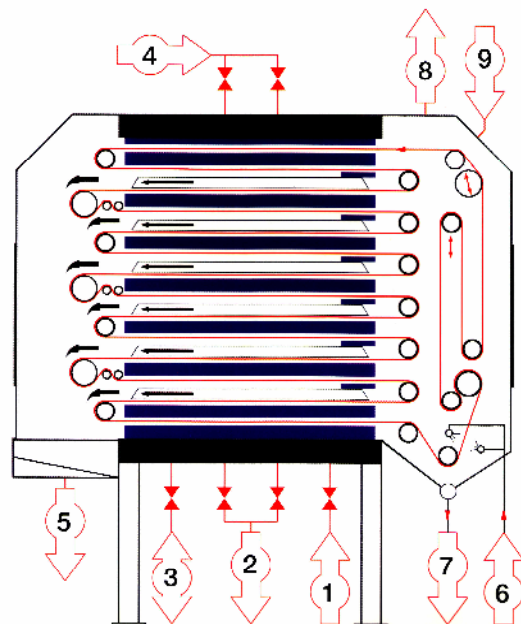
-
-
-



POLYNOVA

Larox, Bethlehem,

: Hoesch,



DUROTEX

-
-
-
-
-
-
-

DUROTEX –

DUROTEX:
3000 ,

-
-
-
-

		, / ²	,	o ,	
6545		650	0,90	180	
9661	PES	450	1,00	150	
9877	PES	250	0,65	150	
6838	PES	840	1,20	150	

